



Enabling the Internet of Things applications



Enabling new usages and services, through *CommonSense*, Your open and unified operating system for connected objects.

Monitor, control and automate your objects.

Bring visibility, predictability (better decisions), coordination and automation for



Productivity



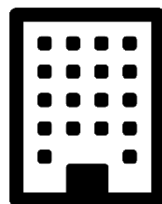
Energy efficiency



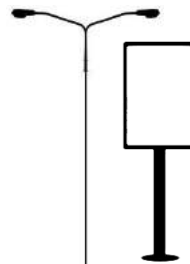
Well being.



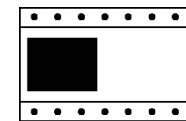
Infrastructures
& Utilities



SmartBuildings
& Home



City
equipment



Instrumentation
& industrial
equipment

Our business

- ▶ Telecom software vendor
- ▶ M2M solution designer:
 - Application Enablement Platform & business applications
- ▶ Telecom and CLOUD computing service provider

Our expertise

8+ years of
expertise in the field of
M2M/IoT applications

16 years of
experience in the
development of telecom
software platforms and
Cloud services

CommonSense

Your IoT Application Enablement Platform



Application enablement

We create the best **IoT infrastructure** for you to collect data.
A mix of:

- Suitable telecom protocols
- Telecom equipment
- Telecom APIs
- Suitable equipment that we can source for you

Management and analytic tools

Simplify the work of maintenance and operation : ensure your IoT infrastructure performs

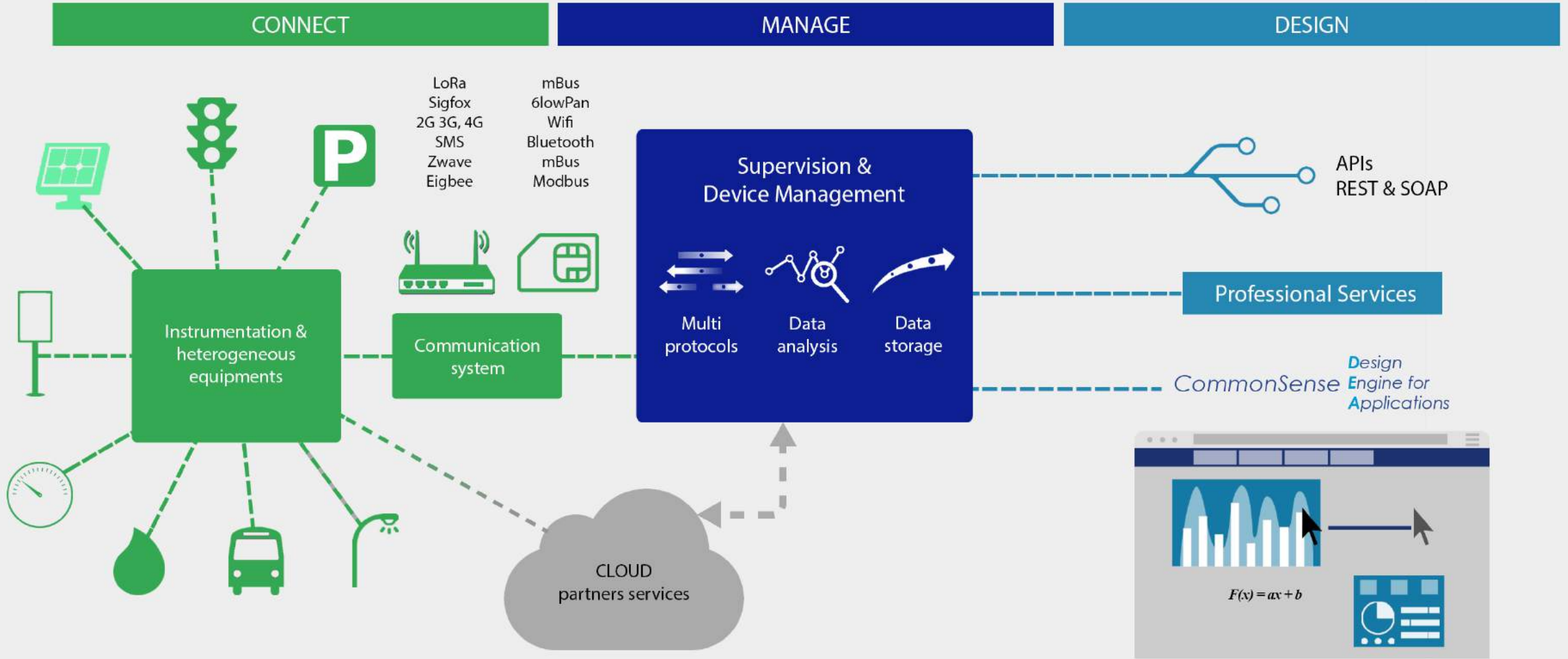
$F(x) = ax + b$

Applications Generator | **Professional services**
Consulting & solution design

Conceive and deploy applications bespoke to users (dashboard, analysis tools, menus, pages, multi-accounts and rights...)

API (RESTful & SOAP)
OPEN DATA / SI / ERP

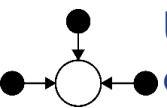
CommonSense telecom software architecture





CONNECT – Application Enablement

*The IoT world is heterogeneous and value is in interoperability.
We create permanent uni- or bidirectional connectivity streams with your heterogeneous assets,
regardless of their protocols, releases and manufacturers.*



Unification of heterogeneous connected objects


An activity is composed of different processes materialized by equipment and technologies: unification of their management enables global efficiencies



Scalable


*Manage from a few sites to thousands (carrier-grade logic)
Adding-up new end points is easy
and you only pay what you use.*

LPWA

Cellular

2G, 3G,
4G, SMS



LAN/PAN







Control your world





Short haul



BUS






Wired



xDSL



Standards



*pending



CONNECT – Application Enablement

Unique expertise of the whole LPWAN spectrum

One of the only recognized
LoRa MultiTech MASTER partner



Link to MultiTech's publication: <https://goo.gl/Bd1VDV>

OneM2M Workshop, ETSI's
headquarters (European
Telecommunications Standard
Institute) - December 2015

Turnkey Smart city service platform
using LPWAN (LoRa) and oneM2M
API



Link to the workshop's description: <https://goo.gl/d04vEw>

SIGFOX partner
IoT platform provider
since march 2016



<https://partners.sigfox.com/companies/vertical-m2m>

French coordinator of
the LoRa The Things Network
(LoRaWAN CLOUD server)



Join the community: <https://goo.gl/WFY0fL>



MANAGE – SDM*

The Supervision and Device Management (SDM) component is at the core of our platform. It offers all software capabilities of the platform to build your IoT application : from remote tools to analytic tools.

Data analytics and decision support



Equipment monitoring

▶ Curves, tables, dashboards,
Equipment trees, reports...
▶



Equipment containering

Organize your equipment's fleet into customized containers. For instance: geographical area, activities, usages...



Condition based alerting

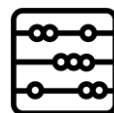
Transmission through email or SMS to user accounts (user groups or single user).

**IF..
THEN**

Condition based management

Create business rules according to conditions over one or several equipment simultaneously.

Set conditions for several usages: predictive maintenance, alerts, geofencing...



Virtual measures

Create your own analytic tools and performance indicators. Calculate for instance average or arithmetic functions, ratios,..



MANAGE - SDM

Operation technology (OT) / IT



Equipment management

- Status
- Remote update
- Remote controls
- Equipment logs

Enable new business models

As A Service approach:

- Performance contracts
- Accurate billing (Ex : Pay Per Use)
- Warranty management

Business support systems



Billing

Thanks to CDR (Call Data Records) APIs



Multi-condition automation & algorithms

Create automation scenarios based on your equipment. For instance, our Smart Home solution includes local load management: the equipment gets on and off automatically to limit/avoid peak consumptions.



Equipment integration module with scripting

Translate your equipment's payload directly on the platform using simple real-time scripting



Multi-accounts and levels management

Customize rights and accounts.
Organize the different levels of your network, Value Added Reseller, sub-clients and users to get an overview of your network.



DESIGN – DEA*

The *Design Engine for Applications* is a CommonSense module that enables to create IoT application interfaces without coding through any web browser

Creation of menus and different types of pages:

Dashboard, HTML pages, tables, maps

Select the provisioned objects

Select the objects to be managed inside the whole of your provisioned equipment

Templates

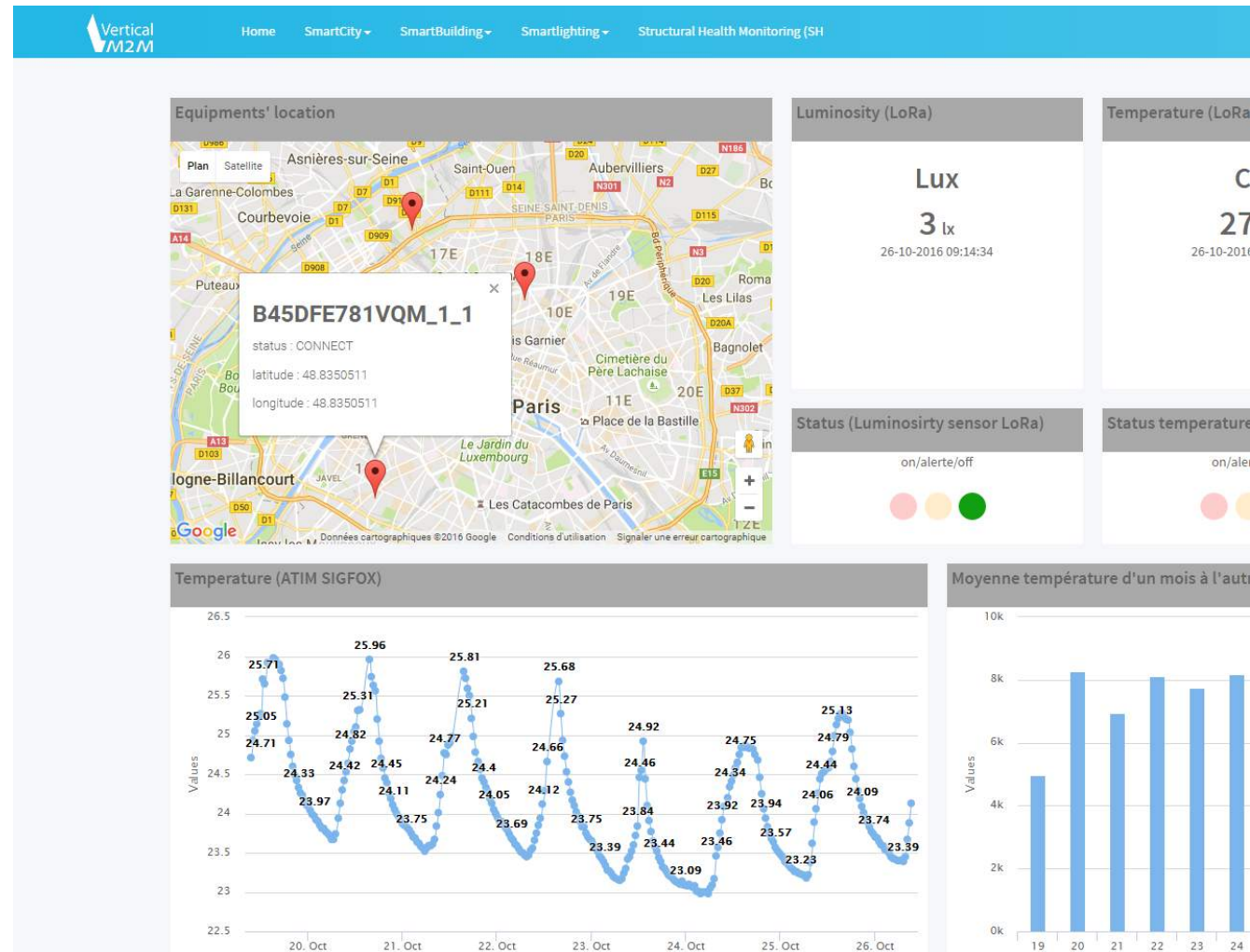
Choose among several web responsive templates

Role and user management

Create roles with different access rights to the page
Set a role to a user.

Rules and automation processes

Define your own scenarios



Professional services

We bring you over 8 years of expertise in the IoT/M2M field

16 years of experience in the development of CLOUD services

Consulting and solution design

We help companies and organization leverage the competitive advance that IoT brings.

- >Market opportunity identification
- >Feasibility study and business model
- >End-to-End Architecture
- >Application development
- >Proof-Of-Concept (POC) and pilot projects

IoT Training

Grasp comprehensively both technical and marketing aspects of IoT/M2M.
How to leverage and implement it ?

They attended our training sessions:



Smart Home Services

Assemble your white label Smart Home solution with our ready to use bricks. Perform local load-shedding by combining renewable energy production and equipment automation. Clients can monitor, control and automate their equipment through any web browser.



Smart Building

Understand the behavior of buildings through time
Lower your energy bill and improve comfort. The unified control panel is your web browser.
Webservices and Apis are fully open contrary to BMS.
We connect building's equipment for tertiary and residential uses.



Renewable Energies

Renewable energy production site monitoring.
Optimize production and return on investment of the installations. U-Shine is composed of intelligent connected equipment and a web responsive portal for data processing and supervision.



Industrial IoT

Control your processes and gain a competitive advantage through visibility, predictability, control and automation of your equipment. Industry and Information Technology have never been so close.



Smart Water

Remotely manage your water treatment plant. The control panel and dashboards are on the web and a mobile application. The user is in control.

Ongoing project

Smart level

Remotely manage your universal tanks. Integrate the management of your tanks to your information systems: you gain visibility and coordination with your related activities such as collect and refill steps.

KFA

cuma 
SAINT - EMILION

Urban display

Organize your content and push it to electronic billboards. Manage your boards from a single point. Thanks to web services, connect your traffic system, weather and push it to the boards.

ARTVISION
communication

Smart Lighting

Supervision and control of urban lighting. **References:**

in  sigfox

&  LoRa™

Acteurs sous NDA

Board



Maurice ZEMBRA, 46 , President & Business Development,

- 15+ years' experience in start-ups (2nd start-up), sales and management
- Strong expertise in telecoms, software and industrial innovation (20+ years)
- Telecom engineering degree (Telecom ParisTech) and masters in economics (Paris-IX Dauphine)



Julien DELAPORTE, 46 ans, co-founder,

- Highly skilled in telecoms and software (> 20 years)
- 13+ years' expérience in management of R&D/operations/technical teams
- Engineering degree from Centrale Lille



Cyril CORTINA, V.P CGI Business Consulting France, member of the Strategic Board

- Reknown Expert from the Energy/Utilities market
- CGI Consulting Partner for 6+ years
- 15+ years' experience in various positions in Consulting firms (Logica, Accenture, CGI)

...relying on a talented team of telecom & software engineers and sales & marketing persons.

Ask for a demo

Maurice Zembra mzembra@vertical-m2m.com

Robert Vivanco rvivanco@vertical-m2m.com

www.vertical-m2m.com

+33 (0)1 43 15 69 85

