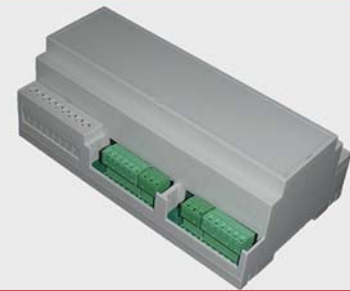




## Key Benefits:



- Seamless integration with eTrackdata™ cloud server provides a quick time to market.
- Monitor and control valuable remote assets today with no development required.
- Monitor your assets anytime, anywhere with cellular data communications.
- Optimize your process and reduce operating costs with real time data from your assets.
- Reduce risk with instant alarm notifications.
- Increase profitability with the efficiency of real time connectivity.

# We connect your assets to the internet.

The **unique feature** of eSensordata™ is the seamless connectivity with eTrackdata™. Simply connect your industry standard sensors, log into the server and start monitoring and controlling your asset from your desktop, cellular phone, tablet or any internet enabled computer. Anytime, anywhere - eSensordata™ keeps you connected with your assets.



## Base Feature Overview:

- Interface with industry standard sensors.
- Analog sensors provide real time data from your assets.
- Digital inputs provide status indicators and alarm notification.
- Control the outputs to turn things on/off on your assets.
- Monitor and control the asset from your cell phone, tablet, or desktop computer.
- 3G cellular data communication secure socket layer (SSL)
- Over The Air maintenance.
- Power 6-1 5Vdc 30mA typical standby current.
- Integrated solar charger and power management system.
- Comprehensive text messaging and email alarm system.
- Optional GPS location and date time stamp.
- DIN rail mount.
- Operating Temperature -40C to +85C.
- Dimensions: 16cm x 9cm x 5.8cm (LWH)  
6.28" x 3.55" x 2.26" (LWH)

## The Process:

1. Identify appropriate sensors and I/O to monitor the asset.
2. Connect the sensors to eSensordata™.
3. Log into eTrackdata™ server.
4. Setup a project and operational parameters.
5. Start monitoring and logging data.

## Customization:

- eSensordata™ is a hardware solution that works out of the box and offers substantial opportunity for customization.
- Many hardware features are easily tailored to make the platform more suitable for your application without the need to design new hardware.
- eSensordata™ may also be used as a reference to design and rebrand a fully customized proprietary application.

## Sample Applications:

Ideally suited for assets requiring M2M and wireless IoT connectivity such as:

- Smart Energy
- Data Logging
- Automotives
- Data Collection
- Remote Diagnostics
- Asset Tracking
- Remote Monitoring
- Security Systems
- Vending Machines
- Utilities
- Remote Tanks
- Gas Wells
- Irrigation
- Air Quality
- Appliances
- Environmental Monitoring
- Fleet Management
- Asset Management
- Telemetry

Canada  
Asset Monitoring Solutions  
# 659 Alastair Ross Technology Centre  
3553 31 Street NW  
Calgary, Alberta, Canada  
T2L 2K7

USA  
7040 NW 2nd Terrace  
Boca Raton, Florida, United States  
33487  
Toll Free : 1 - 888 - 980 - 7229

Phone: 403-717-0310

Fax: 403-717-0311  
sales@asset-monitoring-solutions.com  
www.asset-monitoring-solutions.com